

# REMEDY™

*The Herbal Leave-In Hair Revitalizer*



PROFESSIONAL STYLIST  
Digital Reference Guide

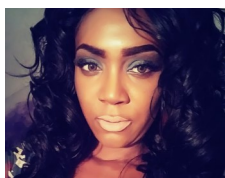
REMEDY is a residue-free Herbal Leave-In Hair Revitalizer formulated to restore the vitality of dry, damaged, dull and brittle hair. If your clients hair is breaking, shedding, will not hold a style, and lacks luster and body, REMEDY is your solution. It is so phenomenal in reviving damaged hair; we call it "The Hairstylist In A Bottle". You will notice a remarkable improvement in the health of your clients hair, your clients will experience the difference, and will be very pleased with the results. If you are a healthy hair stylist, REMEDY must be a part of your healthy hair arsenal. You will be amazed at how it saves you time, energy, and money. REMEDY is a game changer!

# STYLIST TESTIMONIAL

“ *Remedy is like a wonder drug lol. I have used this product on every client. My clients are falling in love with their hair.*

*MY STORY: I've been a licensed stylist for 26 years in 4 states, and finding a product that can be used on each person, no matter the texture, was a fight. I would find myself using 6*

*different conditioners for texture or penetration. I had three different*



*product lines to give my clients the same consistent quality. Processing time on each product was different, leaving my client with an all-day salon experience.*

*With Remedy, my time on each client is approximately 45-60 minutes, and the drying time is cut in half. The hair has a feather-light, weightless feel and sheen, it transforms hard, brittle dull hair that can't hold a style, into the complete opposite which is; The Remedy Flow.*

*The continuous revenue from giving each client top-quality service without all the backbar products is priceless. Just think if you could have one product to do 70% of the work flawlessly, how much more could you profit while spending less time and effort?”*

*- Nicole, Ohio Licensed Stylist*

”

# CUSTOMER TESTIMONIALS



**Keyonna Patrice Carter** reviewed **Remedy Hair Care** — 5★



Nov 19 at 6:02pm • 🌐

Listennnn I don't know what's in this product but hunny I LOVE IT!!



**Remedy Hair Care**



Like




Comment



Share



**Regina Williams**  **Remedy Hair Care**



Nov 20 at 12:14pm • 🌐

Really nice product- **Nicole Rhodes-Smith** Used this on my daughters hair for the first time and it worked perfectly! If you haven't tried this product, I highly recommend you give it a try



You and 1 other



Like



Comment



Share

# Why Does REMEDY Work So Well & Fast?



What makes REMEDY most unique is its ability to give immediate results, therefore does not require multiple applications to reap the benefits. Leaving one to ask how does it work?

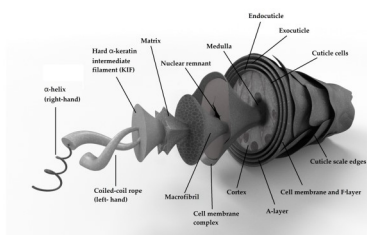
## THE ANSWER IS SIMPLE

The thicker a treatment is, the longer it takes to penetrate the hair shaft and generally requires heat for optimum results, and if the hair is already filled with water, the treatment becomes unable to fully penetrate the hair shaft.

## THE REMEDY DIFFERENCE

In comparison, the consistency of REMEDY is that of water which allows the vital nutrients to ride the microscopic water molecule directly into all layers of the hair shaft and scalp, without resistance. Resulting in instant results and the following benefits:

- Softens Brittle Hair
- Detangles
- Restores Sheen
- Imparts Body & Volume
- Restores The Natural Curl Formation
- Stops & Prevents Breakage
- Invigorates The Hair Color
- Closes The Cuticle by Correcting The Porosity Level, resulting in instant sheen.
- Residue Free





## BASIC TREATMENT

1. Shampoo hair as usual.
2. Spray and thoroughly saturate hair with REMEDY.
3. Gently massage into hair and scalp to ensure good coverage. Do not rinse out.
4. Style as usual.

## INTENSIVE TREATMENT #1

1. Shampoo the hair
2. Saturate hair with "REMEDY".
3. Gently massage into the hair to ensure complete coverage. Do not rinse out.
4. Cover with a plastic cap.
5. Process under **warm** dryer for 15-20 minutes.
6. Remove the plastic cap and allow the hair to completely cool down before handling it.
7. Apply a second application of REMEDY
8. Blow-dry and style as usual.



## INTENSIVE TREATMENT #2

REMEDY may be used with your favorite cream moisturizing treatment for extremely brittle hair. This is especially effective on extremely thick, coarse, and/or porous hair.

1. Follow all directions of INTENSIVE TREATMENT #1 from steps 1 to 3.
2. Apply a cream moisturizing treatment to hair over REMEDY.
3. Cover with a plastic cap, process under a warm dryer for 30 minutes.
4. Allow hair to completely cool down before handling.
5. Rinse hair with cool water, gently towel dry.
6. Reapply REMEDY to hair, LEAVE IN, do not rinse out.
7. Style as usual.

## CONDITIONING TIPS

- Remember, every strand of hair that does not have conditioner on it does not get conditioned.
- Gently blot the excess water from the hair to make space for the conditioner to penetrate the hair shaft.



## PRE-SHAMPOO TREATMENT

The Pre-Shampoo Treatment is used when the hair is extremely dry, brittle, and fragile and should be strengthened to reduce friction and prevent tangling and further breakage..

1. Completely saturate hair with REMEDY before shampooing
2. Cover hair with a plastic cap.
3. Process under a warm dryer for at least 15 minutes.
4. Style hair as usual.

## SHAMPOO ADDITIVE TREATMENT

Spray REMEDY on hair during the shampoo process. When using REMEDY as a Shampoo Additive, you will need less shampoo than normal and the hair will rinse easier.

## THE BENEFITS

- Adds very effective conditioning properties to the shampoo.
- Adds volume to the shampoo lather, resulting in a clearer rinse, leaving less soap residue in the hair.
- Adds a layer of conditioning treatment to the service without increasing processing time.
- Reduce service time

## SHAMPOO TIP

Use cold water for your final rinse to help close the cuticle layer and to bring the blood to the surface of the scalp.



## SILK PRESS & CURLS

REMEDY turns every stylist into a silk press master. Every clients hair will be shiny, smooth, soft, full of body, healthier, and decrease the rate of sweating out.

The key to achieving a flawless look is to properly prime the hair with the SQUEEK TEST (see page 27). No matter the style straight or curls the hair will be healthier, staying straight longer and firmer smooth curls





## BRAIDS, WEAVES & EXTENSIONS

You will be amazed at what REMEDY does for your braid, weave, natural hair, and loc clients. Your job will be so much easier, plus it's great for both natural and synthetic hair. Apply to Braided styles to condition, strengthen, smooth the extension hair, and prevent future matting. Using REMEDY regularly on braided or weave styles will result in healthier hair, less breakage, and the prevention of dryness, which so often results in extreme hair loss.

### BRAIDED STYLES

Apply to the length of the braid, and massage into both hair and scalp. May be used daily to smooth and control flyaway strands.

### BENEFITS

Helps alleviate dry flaky scalp that is common to

braided styles because scalp stimulation is limited. Helps alleviate itchy scalp. Prevents the attached hair from drying the moisture out of the natural hair and causing breakage. Braid removal is tangle-free, Brightens the hair color.



### RETAIL INCENTIVE

Have your clients to apply REMEDY daily to smooth and control fly-away strands.

## WEAVE STYLES

To prevent traction breakage, thoroughly saturate the hair track and weave hair with Remedy™, cover with a plastic processing cap, process under a warm hair dryer, process 15—20 minutes, and allow hair to cool completely before combing.



## TAPE-ON EXTENSIONS

REMEDY is the ideal treatment for Tape-On Extensions; it is oil-free, does not leave a residue, and will not dislodge glue traction. It can be used daily to prevent tangling and helps restore. Improves

the blending of natural and extensions giving a smooth finish. Brightens the hair color.



## SEW-IN WEAVES

REMEDY should be spray directly on the weave track to condition the hair to prevent it from losing moisture levels causing breakage and hair matting. When the weave is removed hair breakage will be considerably less because the hair is treated throughout the life of the weave. Brightens the hair color.

## GLUE-IN WEAVES & WIGS



REMEDY will not dislodge the glue and should be applied directly on the hair from scalp to ends, to keep the hair healthy and manageable. Bright-

ens the hair color.



### RETAIL INCENTIVE

Recommend you clients to lightly mist with REMEDY to prevent tangling and frizzing of both natural and weave hair.



## LOCS

REMEDY'S ability to easily penetrate the very center of the locked hair, results in soft, fluffy, pliable, plump locs. Revitalizes once dry, dull, and brittle locs into shiny, soft, and bouncy vibrant locs.

## BENEFITS

- Restores moisture level and prevents individual loc breakage.
- Makes tight and compacted locs fluffy, bouncy, and vibrant.
- Restores sheen and body.
- Moisturizes dry scalp
- Brightens dull hair color.
- Apply to the scalp to alleviate flaky irritated scalp due to lack of stimulation.

## RETAIL INCENTIVE



Recommend your clients to apply REMEDY at least once a week, to restore and maintain moisture levels.

1. Cover with a plastic treatment cap for 30 minutes.
2. Remove cap allow to dry naturally.



## LOC PRE-TREATMENT

Always apply **REMEDY** to locs **Before Shampooing**. If the hair is shampooed first, it will absorb too much water, leaving no room for treatments to penetrate.

## DIRECTIONS

1. Thoroughly saturate each loc with **REMEDY** from scalp to ends.
2. Massage **REMEDY** into each loc from scalp to ends.
3. Cover with a plastic treatment cap.
4. Place under warm (not hot) dryer for 35 minutes.
5. Remove plastic wrap.
6. Reapply **REMEDY** a second time, making sure to saturate well.
7. Reapply plastic cap for an additional 20 minutes under a **COOL** dryer.
8. 8. Proceed as usual.



## CHEMICAL SERVICES

REMEDY is great to use with your chemical services; it helps improve the overall health of hair and scalp by helping restore porosity and elasticity by sealing the cuticle layer. Thereby increases the strength of the hair during the chemical process. This resulted in a noticeable improvement in luster and manageability after the chemical process. You will find that your clients' chemically treated hair is much healthier with REMEDY supporting the process.

### RELAXER PRE-TREATMENT

1. Spray REMEDY directly to hair only before all relaxer services.
2. Section hair for relaxer service.
3. Place under a cool dryer until the hair is completely dry.
4. Process relaxer service as usual.

### POST RELAXER TREATMENT

1. Ensure that the relaxer is thoroughly rinsed out of the hair.
2. Gently blot excess water from hair, without disrupting the cuticle layer.

3. Apply REMEDY, making sure to completely saturate the hair, and gently massage through hair for 1 minute.
4. Apply neutralizing shampoo directly over REMEDY. Apply neutralizing shampoo 2 additional times.
5. After all shampoo is thoroughly rinsed out, rinse with cool water (the colder, the better). If the client has high blood pressure, rinse with lukewarm water.
6. Apply REMEDY Intensive Treatment # Two.
7. Style as usual.

## BURN RELIEF

- REMEDY may be directly applied to mild chemical and heat burns to soothe and assist the healing process.
- Spray REMEDY on the scalp to relieve the burning sensation.



### RETAIL INCENTIVE

Recommend that clients spray a small amount into their hands and apply to the hair line to smooth the hair and help prevent breakage.

Lightly mist the hair 30 to 40 minutes prior to flat ironing to remove frizz, smooth the hair, and protect from heat damage.





## PERMANENT COLOR

Using REMEDY on hair before permanent color treatments helps correct porosity, ensuring a more even color.

1. Lightly saturate hair with REMEDY.
2. Comb through hair to evenly distribute.
3. Place under a cool dryer until dry.
4. Apply color as usual.
5. Saturate hair with REMEDY immediately after rinsing color.
6. Proceed as usual.





## BLEACHING & HIGHLIGHTS

When lightening hair with bleach, follow above steps. For Foil Highlights, use REMEDY to stop the action and strengthen the hair as you remove the foils.



## DEMI COLOR

Do Not apply REMEDY before applying demi-color, it will fill the hair shaft and the color will not penetrate well.

## COLOR TIPS

- Use REMEDY between a double-process coloring service to strengthen and prevent breakage.



## RETAIL INCENTIVE

Recommend clients to apply REMEDY twice a week to reduce color fade and moisture loss.



## HAIR CUTTING

REMEDY helps to remove the friction from hair whether your are cutting wet or dry hair.



## SPLIT ENDS

In the cases where clients are not open to cutting their split ends, REMEDY is a game changer and will help smooth and manage unruly split ends.



## CHILDRENS HAIR CARE

REMEDY is ideal for children's hair care needs.

- It reduces discomfort by instantly detangling.
- It's a quick conditioning treatment.
- It can be sprayed on braided styles to remove braid frizz and restore the sheen.
- Prevents breakage,
- Styles hold longer.
- Can be used on all hair textures





## REMEDY FOR BARBERS

The art of barbering has gone to new heights, and the art forms created by today's barbers can only be defined as awesome. Barbers have reinvented the Art of Barbering, resulting in a level of creativity and precision that quite frankly is sometimes hard to believe.

They have added and infused their own flare and flavor with great ingenuity into the barbering process of times past. Creating some of the most artistically inspiring works of art on a head of hair. If you are one of these artistic masters, REMEDY can assist you in creating your masterpiece with even greater ease, by instantly conditioning and producing a more manageable head of hair for you to do what you do.

## SHAVING RELIEF

In addition, REMEDY also helps alleviate razor bumps and ingrown hair by softening the



facial hair, preventing it from coiling back into the skin, and eliminating undue friction by nourishing



the skin as well.

## ADDITIONAL BARBER BENEFITS

- Helps reduce and alleviate the skin's irritation and sensitivity due to daily shaving.
- REMEDY'S convenience increases service value because, and does not require pre-washing or rinsing.
- May be used prior to cutting without leaving a residue that prevents a smooth cutting process.
- May be used as one of your regular styling tools or as an intensive treatment service.

## BARBERING DIRECTIONS

1. Lightly spray hair or facial hair
2. Brush hair to evenly distribute
3. Allow to dry
4. Proceed with barbering service
5. Notice the incredible difference!



## THE REMEDY FLOW

**THE REMEDY FLOW** It is the result of the hair after it has been properly cleansed, primed, and conditioned.

**THE REMEDY FLOW** is the softness, body, sheen, volume, silkiness, and style hold that comes with proper application.

**THE REMEDY FLOW** By mastering the priming process and passing the SQUEAK TEST with each client.

*“Trying to condition hair coated with product residue, is like painting a wall covered in tar”*

## 3 NEED TO KNOW FACTS

1. The Welcomed Side Effect
2. Light Colored Hair Instructions
3. The SQUEAK TEST Priming The Hair

### FACT 1 | A WELCOMED SIDE EFFECT

REMEDY naturally has a high concentration of Essential Fatty Acids giving it the ability to soften, penetrate and lift built up dead skin on the scalp, that may flake, itch, and smother the hair follicle causing hair thinning over time.

#### TEST RESULTS

Test results have shown that the initial use of REMEDY on a regular basis, on scalps with a high concentration of dead skin build-up may temporarily experience itchy scalp, as a result of the shedding of dead skin. Test results have also indicated that the itching will cease once the dead skin layer has been lifted, the time factor varies from person to person, depending on the degree of build up. However, we have found

that all itching usually stops about four weeks after it begins.

The advantage to this process, is that the

scalp is exfoliated, stimulated, better able to breath, and blood flow to the scalp is increased, thus **promoting healthy hair growth and minimizing thinning.**





## HOW TO AID THE PROCESS

To aid the process simply brush clients scalp with a bristle brush prior to shampooing and make sure to thoroughly massage the scalp while shampooing. Or use a scalp stimulating shampoo brush.

## EXPEDITE THE EXFOLIATION PROCESS

1. To aid the process simply brush clients scalp with a bristle brush prior to shampooing
2. Thoroughly massage the scalp while shampooing., or use a scalp stimulating shampoo brush.
3. Give client a scalp massage after drying the hair and before styling.
4. Advise and encourage your clients to massage and brush their scalps for 2 minutes prior to bed, to lift and remove dead skin and minimize itching.
5. If the above process is adhered to itching should stop around the fourth week, if not before.

**IMPORTANT** | It is important to inform your client of this REMEDY Effect, to prevent them from thinking it is due to an allergic reaction.

## FACT 2 | LIGHT-COLORED HAIR



### WHY SPECIAL INSTRUCTIONS?

REMEDY is a full spectrum herbal product, meaning it has NOT been stripped of its vital nutrients or natural colors. If your clients hair color is naturally light or the result of a color service REMEDY should not be applied DIRECTLY to the hair because it may cause a golden discoloration. This applies to the following hair color categories:

- Silver
- Salt & Pepper
- Light Blonde
- White
- Platinum
- Neon Colors
- Pastels Colors
- Vivid Colors

## HOW TO KNOW THE DIFFERENCE

If the majority of your clients hair is a darker color or red pigmentation with minimal (10% or less) strands of gray, randomly scattered throughout your hair than REMEDY can be applied directly to the hair. It will actually give the gray strands a golden hue allowing it to blend better with the darker shades of your hair. There are two options to effectively use REMEDY on light colored hair without causing discoloration.

## WHEN TO USE

Follow these instructions when you want avoid discoloring light colored hair, with all other clients you can be confident with applying REMEDY directly to the hair.



## LIGHT HAIR DIRECTIONS

### OPTION 1

1. Add 1 part REMEDY to 2 parts cream conditioner, blend well.
2. Apply to hair.
3. Process as usual.

### OPTION 2

REMEDY may also be sprayed onto the hair after shampoo has been applied and completely lathered into the hair.

## GRAY HAIR BENEFITS

- Alleviates the unruliness of gray hair by infusing it with nutrients and sealing the cuticle layer.
- Softens & Smooth's The Hair.
- Improves Porosity
- Pliable & Manageable

## FACT 3 | THE SQUEAK TEST

No matter how good or effective a treatment may be it will prove to be ineffective if the surface of the hair has not been properly cleansed and primed for optimum results.

### PREPARE THE HAIR

Before using REMEDY the hair must be properly primed to ensure that all preexisting product residue is thoroughly removed from the surface of the hair and scalp. If the hair shaft is coated with waxes, oils, hold holding spray, silicon and other styling products improper absorption will yield inadequate results.

Keep in mind that although clients may have regular professional hair appointments, the hair is rarely cleansed of all product residue. We have created a method to ensure proper cleansing, called the SQUEAK TEST.

### WHAT IS THE SQUEAK TEST?

The “SQUEAK TEST” is comprised of Two Phases, and determines if the hair has been properly primed for the REMEDY treatment.

**Phase 1** consists of the complete removal of all product residue by following the SQUEAK TEST procedure.

**Phase 2** ensures that all shampoo residue has been properly rinsed from the hair and scalp.

### SQUEAK TEST RESULTS

By simply firmly pulling the hair between fingers as you move down the hair shaft during the shampoo process. This will reveal any areas of the hair that are still coated with residue due. When all product residue is properly removed, the hair will actually “Squeak” and the hair will have the required traction to fully accept the treatment.

6. Check to see if residue has dissolved by firmly running your fingers down the hair shaft to determine if traction has been established. IF NOT, add more shampoo to the hair and massage it through the hair.
7. Allow to sit an additional 15-20 minutes.
8. Repeat Step 6 if necessary.
9. Apply just enough water to the hair to produce a strong lather.
10. Massage into hair for another 5 minutes.
11. Proceed to shampoo bowl, recline client back, apply warm water to hair to get a full rich lather, shampoo hair, making sure to massage the scalp and hair line to help lift and re move build up.
12. Rinse with tepid to warm water, do not use hot water (it tangles the hair).
13. Reapply shampoo and gently massage to cleanse hair. Reapply shampoo as many times needed to remove product residue.
14. Run your fingers down the surface of the hair to determine areas that require additional saturation. If there are areas that are not "SQUEAKY"
15. Towel dry hair, to remove all excess water reapply shampoo concentrate and allow to sit for another 15 minutes.
16. The ultimate result is hair that actually "SQUEAKS". Remember, all areas that Do Not "Squeak" are not properly primed and will affect the outcome.

***"The SQUEAK TEST Is The Most Important Factor  
In Achieving The REMEDY Flow"***

## Phase 1 | PROPER CLEANSING



**Phase 1** can be lengthy depending on the amount of build up to be removed, and the length and density of the clients hair. To reduce stress on the clients neck do not recline them back until you are actually ready to shampoo the hair.

### SQUEAK TEST DIRECTIONS

1. DO NOT ADD WATER TO THE HAIR AT THIS POINT.
2. Apply a non-cream Clarifying Shampoo directly to the hair, thoroughly saturate all hair until it is fully immersed in shampoo.
3. Make sure every strand and section of hair is thoroughly covered with shampoo, this is how the build up is dissolved. If you do not use enough shampoo at this point, the residue will not be dissolved when the water is applied. It will be more difficult and time consuming to remove it after the fact. How effectively you saturate and work the shampoo through the hair, will ultimately determine how long the process will take to remove all residue.
4. Work the shampoo throughout the hair and scalp, making sure to apply to the hair line.
5. Allow to sit for a total of 20 minutes.

## Phase 2 | PROPER RINSING



**Phase 2** of the SQUEAK TEST is to thoroughly and completely remove the shampoo residue from the hair and scalp. Just as product residue will adversely affect treatment results, shampoo residue will also cause inadequate results. The rinsing process actually begins during the shampoo process by thoroughly rinsing out all shampoo in between each shampoo application, regardless of how many applications are required.

### IMPROPER RINSING

Remember as we rinse out the shampoo lather, it carries with it the residue that we are working so hard to remove. Failing to rinse thoroughly allows the hair to re-trap the debris and soap curds back into the hair. Our Clarifying Rinse Crystals ensure that all residue is thoroughly rinsed from the hair, by neutralizing the shampoo lather.

### REMINDERS

- Rinse the hair for a total of 3 to 5 minutes (longer if required) in between each shampoo application, as well as the final rinse.
- Rinse hair with warm, tepid or cool water,.

Hot water damages and raises the cuticle layer and, causes the shampoo lather to expand making it harder to completely remove.

## CLARIFYING RINSE CRYSTALS

### MIXING DIRECTIONS

1. Measure out 1 scoop of Clarifying Rinse Crystals, or the entire single packet.
2. Add to 1 gallon of warm water, mix well.
3. Thoroughly rinse hair of all shampoo residue.
4. Pour 6 to 8 ounces of Clarifying Rinse Crystal Water on hair, massage through hair.
5. Rinse hair with cool water.
6. Reapply Clarifying Rinse Crystal Water a second time.
7. Rinse with cool to cold water.
8. Gently towel dry hair, do not ruffle the hair.
9. Secure a towel on hair and allow to absorb remaining water from hair.
10. Remove towel, section hair into 4 quadrants.
11. Apply REMEDY to each quadrant from the scalp to ends, secure each section with a clip.
12. Allow hair to sit and absorb Treatment for 5 minutes.
13. Style as usual.





## SQUEAK TEST REMINDERS

- There are cases where the majority of your time will be spent removing built up residue, it can not be over emphasized how important proper priming is to achieve desired results.
- If the hair contains heavy waxes, oils, sprays, silicon and other styling products, it may be necessary to reapply the Shampoo Concentrate several times before applying water.
- In the event that water is applied to the hair before the Shampoo Concentrate, the hair will need to be completely dried under a hooded dryer and then reapply Shampoo Concentrate to dry hair, in order to completely dissolve the product residue - This step will save you a lot of extra time in the long run, removing product residue after the hair has been wet is virtually impossible, because water and oil does not mix.



## THE BENEFITS & USES

- Restores and locks in the natural curl formation
- Add to hair during shampooing
- Effective on natural and synthetic hair
- Helps correct porosity
- Brightens faded hair color
- Use to boost and fortify other conditioning treatments
- Effective on natural and straight hair, women, men, children, & men's facial hair
- Use to dilute other products, where plain water is required
- Absolutely leaves no residue or weighs the hair down

- Seals the cuticle layer restoring incredible sheen and body to the hair.
- Detangles, & softens.
- Heat Protectant
- Does not release toxic smoke when using hot tools.
- Apply directly after relaxer, hair color and other chemical services
- Apply to dry hair as a pre-color conditioner
- Shortens drying time.
- Adds volume, body & sheen.
- Perfect for clients that do not want chemical straighteners.
- Styles hold longer.



# REMEDY Refill Concentrate



WE Care! . . . and The REMEDY Refill Size was Born. One of our contributions to Mother Earth is to reduce the amount of plastic packaging that ultimately ends up in our soil, air and water. So we came up with a wonderful idea, and it goes like this: instead of continuing to sell additional 16oz bottles of REMEDY to the same loyal customers why don't we offer a 1oz

REMEDY Refill Size that they pour into their existing empty REMEDY bottle and simply add 14.5 ounces of distilled water.

Wala! We decided to do that, and of course you get your REMEDY Refill Size at a lower price because it's more cost effect for us also.

## PROFESSIONAL PRICE RATES

16oz.	\$34	(ret. \$38)
8oz.	\$18	(ret. \$22)
1oz Refill Concentrate	\$30	(ret. \$35)
1oz Trial Size	\$6	(ret. \$8)

## SALON RETAIL

Offer REMEDY to your clients to help keep their hair healthy in between visits.

## SALON BACKBAR

REMEDY is also available in larger sizes of:

32oz

64oz

1 gallon

Contact Beverly for details:  
[remedyhaircare@gmail.com](mailto:remedyhaircare@gmail.com)



## PROFESSIONAL PRICE RATES

16oz.	\$34	(ret. \$38)
8oz.	\$18	(ret. \$22)
1oz Refill Concentrate	\$30	(ret. \$35)
1oz Trial Size	\$6	(ret. \$8)
Clarifying Rinse Crystals 10oz	\$12	(ret. \$14)
Clarifying Rinse Crystals Single Pack	\$3	(ret. \$5)

## REMEDY Retail Sales

We have very cost-effective retail packages for solo stylist and salons. We encourage you to offer REMEDY for retail in your salon, The Benefits:

- Your client's can conveniently maintain healthy hair in between appointments, making your job so much easier.
- Increased Revenue

## SALON BACKBAR

REMEDY is also available in larger sizes of:

32oz

64oz

1 gallon

# REMEDY Hair Care

## STYLIST INFLUENCER OPPORTUNITIES

### AFFILIATE PROGRAM

- Earn commissions on every sale by sharing your Affiliate Link or Coupon Code.
- All commissions, tracking, and payouts are fully automated and can be accessed 24/7.

[AFFILIATE SIGN UP](#)

---

### TESTIMONIAL & DEMO VIDEO SUBMISSION

- Submit videos of your clients before and after using REMEDY
- Your client submits a testimonial of how REMEDY helped their hair.

### COMPENSATION

Submit four (4) videos per month and receive a 25% discount with each video submission. (Per 16oz bottle).

Video 1 | \$25.50

Video 2 | \$17,00

Video 3 | \$8.50

Video 4 | FREE

### REQUIREMENTS

- A one-time video/image submission release form is required.
- Video HASHTAG | #remedyhaircare
- Influencer orders must be placed directly, instead of online.



**To Become An Influencer**

Email, Call or Text | Beverly

remedyhaircare@gmail.com | 313-595-4388